



New Hangar Available For Pre-Lease

Republic Airport, Farmingdale, New York
30k SF Hangar Facility

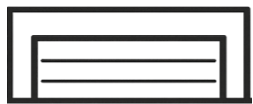


SRAI FARMINGDALE OVERVIEW

SR Aviation Infrastructure ("SRAI") is pleased to offer the opportunity to pre-lease a 30,000 SF dedicated hangar at Republic Airport ("FRG") in Farmingdale, NY. The facility will offer 24/7 fueling services at a discount vs. FBO rates and an exclusive, discreet experience for owners and operators seeking private hangar space in the NYC metropolitan area.



Hangar Features



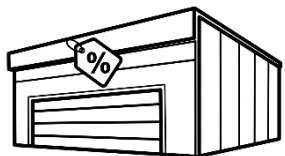
30k SF Hangar Facility



24/7 Fueling Services



SRAI
FARMINGDALE



Significant Discount to TEB & HPN



Quick Access to Manhattan

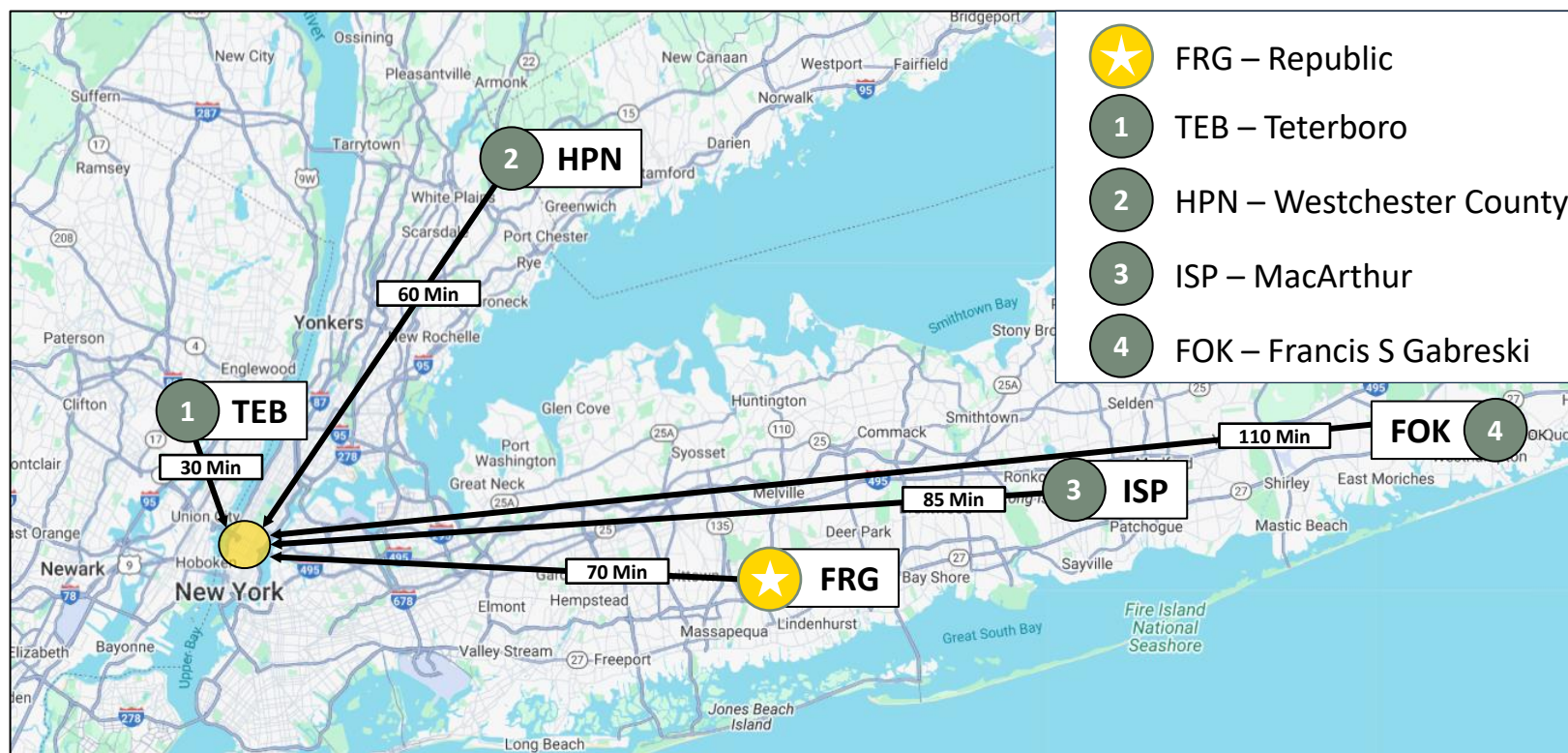
Unique Opportunity

Approximately one hour drive by car and 15 minutes by helicopter from Manhattan, SRAI Farmingdale provides direct access to the world's largest and most active private aviation hub. This represents one of the few remaining opportunities to secure exclusive, private hangar space in the NYC metro area.

SRAI FARMINGDALE – PREMIER HANGARS SERVING NYC METRO

With zero reported delays in 2025, tenants at SRAI Farmingdale are far less susceptible to delayed departures than aircraft at Teterboro or Westchester County. Combined with efficient access to Manhattan and lower occupancy costs, FRG represents a compelling option for private flight departments, individual owners, charter operators, or any other aviation-related businesses.

NYC METRO - BUSINESS JET ACTIVITY								
AIRPORT OVERVIEW						2025 DELAY DATA ¹		
Airport	Code	Based Aircraft	Airport Total Hangar SF	Number of FBOs	Drive Time to NYC - Midtown	Total Delays	Total Delay Minutes	Average Delay Times (Min)
Teterboro	TEB	217	723,000	3	30 Minutes	6,324	259,688	41
Westchester County	HPN	127	493,000	3	60 Minutes	1,157	52,143	45
Republic	FRG	99	500,350	2	70 Minutes	0	0	0
Long Island MacArthur	ISP	33	222,000	1	85 Minutes	1	38	38
Francis S Gabreski	FOK	7	140,000	2	110 Minutes	0	0	0



¹ FAA Data

HANGAR DEVELOPMENT

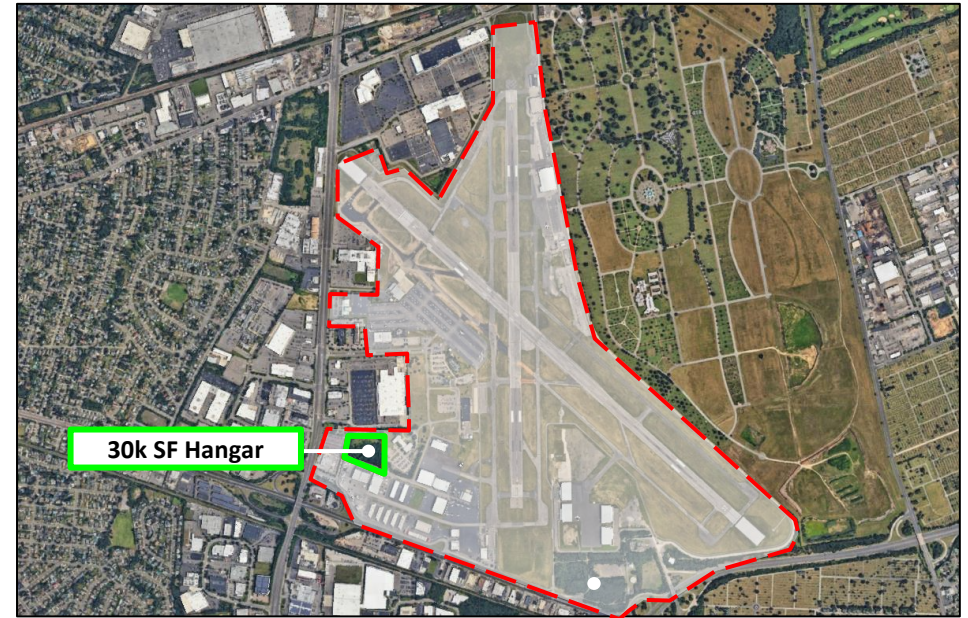
The development features a turnkey single-hangar facility with 28,000 SF of hangar space and 2,000 SF of office and support space, delivering Q4 2027.

Overview

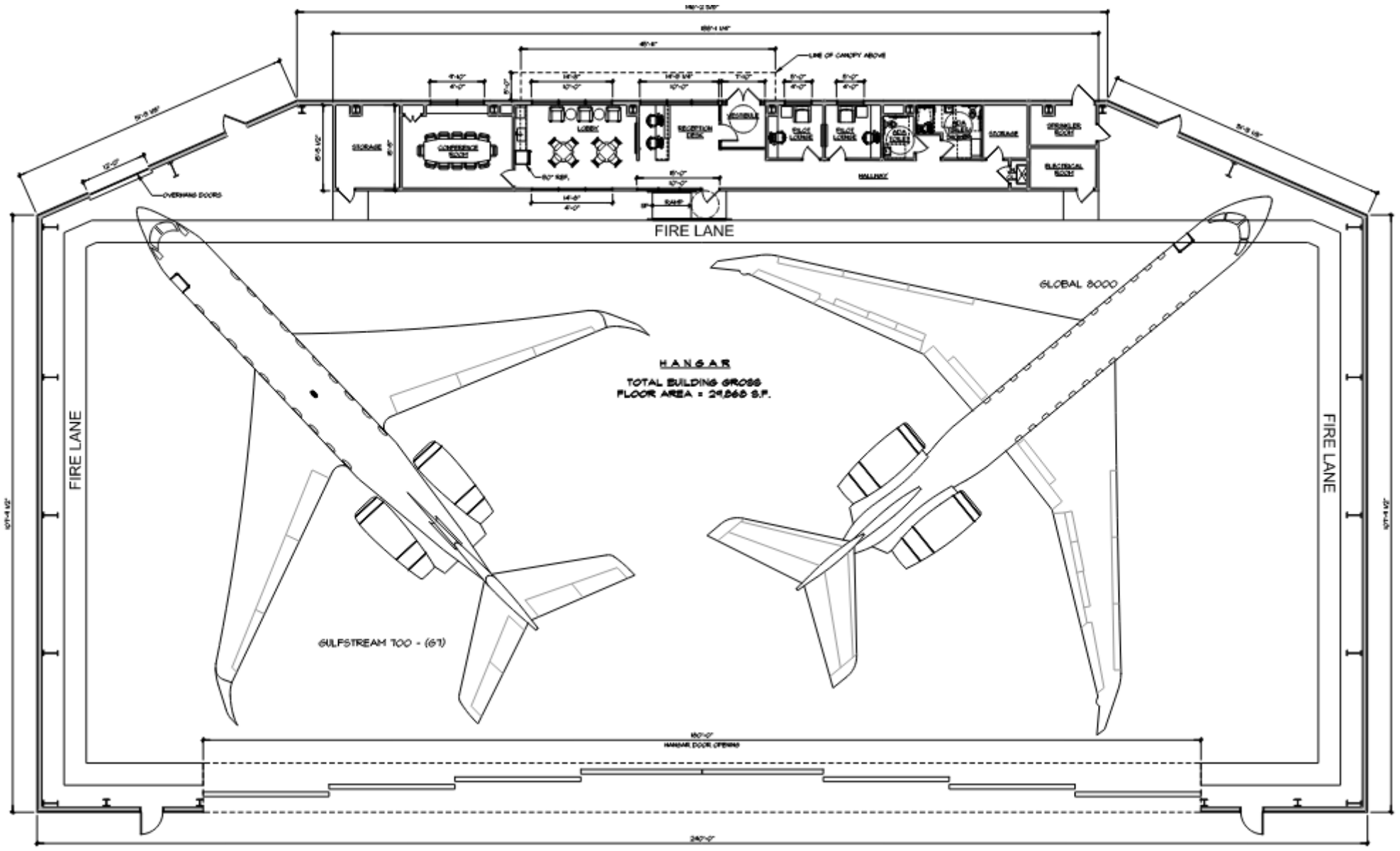
- The 125' x 240' hangar with a 180' door and 28' clear height is designed to accommodate all modern large-cabin and ultra-long-range aircraft.

Hangar Amenities:

- Climate-controlled environment with full heating and A/C
- Fire suppression with 24/7 monitoring
- Ground power units and air start capability
- Enclosed private carport
- Reception and conference room
- Full kitchen, showers, and dedicated workshop and tech offices



FLOOR PLAN



RENDERINGS



COMPANY OVERVIEW

SR Aviation Infrastructure (“SRAI”) is an investment platform focused on the acquisition, development, and leasing of aviation-related real estate, including airplane hangar space for based aircraft, FBOs, MROs, flight schools, charter, and management companies across the United States. SRAI has acquired five assets to date:

SRAI Las Vegas



Harry Reid International Airport | Las Vegas, NV
26-hangar, 315k SF hangar facility

SRAI San Antonio



San Antonio Airport | San Antonio, TX
7-hangar, 126k SF hangar facility

SRAI Bozeman



Bozeman Yellowstone Airport | Bozeman, MT
4-hangar, 158k SF hangar facility

SRAI Farmingdale



Republic Airport | Farmingdale, NY
400k SF hangar development

SRAI Rocky Mountain



Rocky Mountain Metro. Airport | Denver, CO
2-hangar, 89k SF hangar development

TEAM OVERVIEW



jon@someraroadinc.com

JONATHON REESER

President

Jonathon is a Partner at SomeraRoad, initially leading the firm's acquisition and asset management efforts across its value-add and opportunistic verticals, while overseeing the Nashville headquarters. Since the creation of SR Aviation Infrastructure in 2024, Jonathon has served as President, working to grow the platform from one standalone acquisition to an operating business targeting over \$1B in owned assets.

Prior to joining SomeraRoad, Jon was a Vice President at Sovereign Capital Management in San Diego, focused on investing in distressed real estate. There, he led the acquisition and asset management of a \$6 billion TIC portfolio with 150+ properties nationwide.

Jon holds a degree in Business Administration and Finance from Point Loma Nazarene University.



montekoch@msn.com

MONTE KOCH

Senior Advisor

Monte Koch is a key player and expert in the aviation industry, having also had a storied career in the banking and real estate industries. Mr. Koch currently serves on the board of the National Business Aviation Association as its Chair Emeritus. He holds an ATP license and is type rated in the Falcon 10, G-IV, G-V and Boeing 747-400. He also holds helicopter and seaplane ratings.

Monte is a former partner at BDT & Company, co-founder and a former board member of Ten-X, and Global Head of Real Estate Investment Banking and Chairman of Mergers & Acquisitions for the Americas at Deutsche Bank.

Mr. Koch graduated from The College of William & Mary with a BBA in management.



tomaso@someraroadinc.com

TOMASO ROCK

Vice President

Tomaso Rock is a Vice President at SomeraRoad, focusing on acquisitions and asset management.

Prior to joining SomeraRoad, Tomaso was an Associate at CloudKitchens, a real estate and tech start-up that focuses on acquiring and developing underutilized properties for manufacturing facilities and e-commerce distribution sites. In his role, Tomaso supported all stages of the investment life cycle, from market selection and acquisition sourcing to project approvals and facility development.

Tomaso received a B.S. in Industrial and Labor Relations from Cornell University, where he also minored in Real Estate and Film.